

Christopher Blake, of **C & M Blake Engineering Services** has been part of the Tasmanian engineering community for over thirty years working for many of Southern Tasmania's premier engineering workshops.



Learning all aspects of the trade the old school way from a generation of skilled tradesmen who had helped build

Tasmania's world class renewable energy power system:

- Precision fitting & assembly
- Heavy machining
- Fabrication
- Materials testing
- Corrosion control
- Tasmania's first CNC machines



Manufacturing specialist marine products for the State's shipbuilding industry:

- CNC machining
- Hydraulic components machining & assembly
- CAD drafting



Precision machining, prototyping, toolmaking & heat treatment:

- Manufacture & repair of production machinery
- Injection moulding tooling
- Heat treatment of metals
- Precision gear & spline machining
- Prototype manufacture of medical, optical, surgical and defence instruments and devices



Global company recognised for its expertise in manufacture and

servicing of power generation equipment:

- ISO 9001 Quality Assurance compliance
- Project co ordination
- Estimating, purchasing & budgeting
- Occupational Health, Safety & Environmental compliance
- Work methodologies
- Condition assessment & refurbishment recommendation
- Production of project Final Reports
- Non-Destructive Testing
- NATA compliance to ISO 17025

**'FIND THE FAULT BEFORE IT FAILS'**



**C & M Blake Engineering Services**

**ABN: 81 603 672 000**

**Chris Blake: 0477 862 009**

**All enquiries: [tasndt@gmail.com](mailto:tasndt@gmail.com)**

**For more information:**

**[www.cmbengineeringsservices.com.au](http://www.cmbengineeringsservices.com.au)**

**C & M BLAKE  
ENGINEERING SERVICES**

**CHRIS BLAKE  
ENGINEERING TECHNICIAN**

**NON-DESTRUCTIVE TESTING**

**PROJECT PLANNING**

**DRAFTING**

**CONDITION ASSESSMENT**

**INDEPENDENT INSPECTIONS**

**QUALIFIED TRADESMAN**

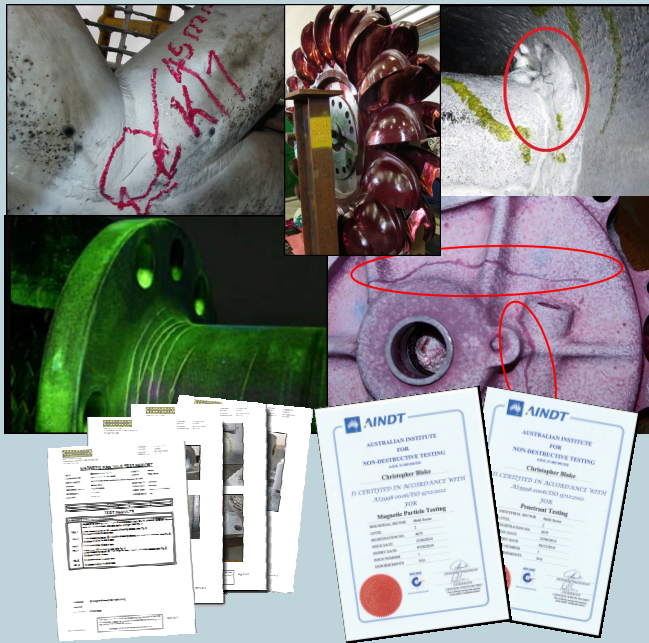


# C & M BLAKE ENGINEERING SERVICES

## NON-DESTRUCTIVE TESTING

Mechanical components are subjected to stresses in service from dynamic and static loading, temperature changes and corrosion resulting in cracking which can remain undetected visually until there is a catastrophic failure. This can be accelerated by exceeding design loads, inadequate maintenance or remaining in service in excess of the lifespan intended by their designers.

The correct NDT method applied according to strict guidelines by a trained and certified technician can detect discontinuities in metallic structures, welds, castings and forgings before they are large enough for the part to fail in service.



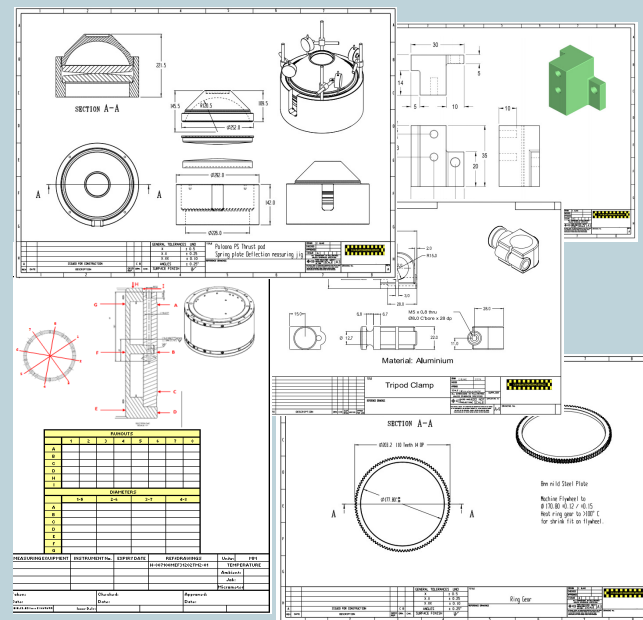
I have tested everything from wheel studs to Hydro turbines. Full reporting provided to relevant Australian or International Standards. Certified to AS3998/ISO9712 [NDT personnel] with the Australian Institute of Non-Destructive Testing (Cert. Board # 4679).

## PROJECT PLANNING & WORKSHOP CO-ORDINATION

With over thirty years experience in engineering workshops covering all aspects of machining from intricate surgical instruments to Hydro turbine components as well as CNC and heat treatment experience. I can provide project planning, supervision and final inspection & reporting services on a contract basis to cover short or long term workload issues. I am familiar with ISO 9001 Quality Procedures and current OHSE requirements.

## **CAD DRAFTING FOR DESIGN , MANUFACTURE & INSPECTION**

Using 3D solid modelling I can produce drawings for 'proof of concept' , detailed workshop drawings to AS1100 , and associated views and sections for Inspection Record Sheets, covering the entire process from concept to completion.



## CONDITION ASSESSMENT, PRE-DELIVERY & 3RD PARTY INSPECTION

I have extensive experience and knowledge of rotating machinery, water control valves, hydraulic and lubrication filtration systems, heat treatment and testing of metals, and precision dimensional inspection. Along with an attention to detail and ability to interpret drawings, specifications and standards I can provide independent inspections and assessments on manufactured or refurbished plant and equipment prior to final acceptance with detailed reporting provided.

## A SKILLED SET OF HANDS

For when you need a skilled tradesman who understands and appreciates your need for precision and quality I can offer over thirty years of continuous learning and pursuit of excellence in my trade.

**CURRENT LICENCES & PERMITS:**

- ◇ Trade Certificate—Fitting & Machining
- ◇ Post trade certificate—CNC Programming
- ◇ AINDT level 2 MT & PT (ISO9712)
- ◇ Workplace First Aid & CPR
- ◇ Confined Space Entry
- ◇ Construction Industry White Card
- ◇ EWP Yellow Card—Boom & Scissor Lift
- ◇ High Risk Licence—Fork Lift
- ◇ Hydro Tas Level 2 Instructed Person
- ◇ Nyrstar Site entry Induction
- ◇ AGL (Vic) Site entry Induction

- ◆ C & M BLAKE ENGINEERING SERVICES Is fully insured for Public liability, Professional Indemnity & Worker's Compensation